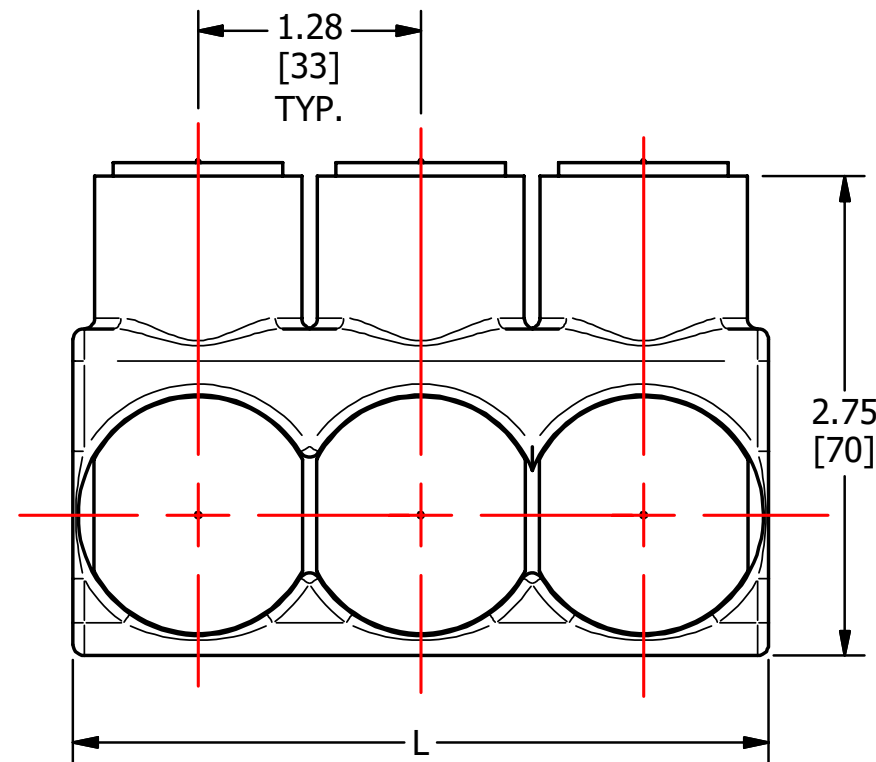
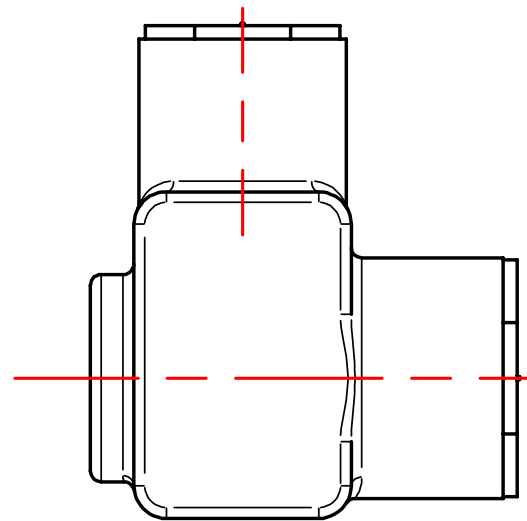
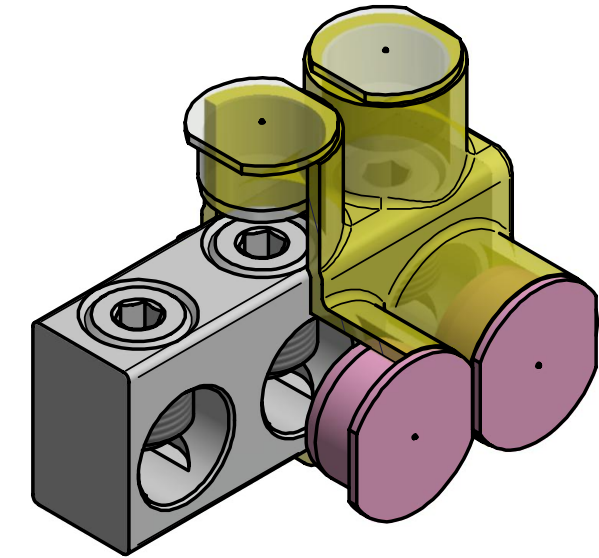
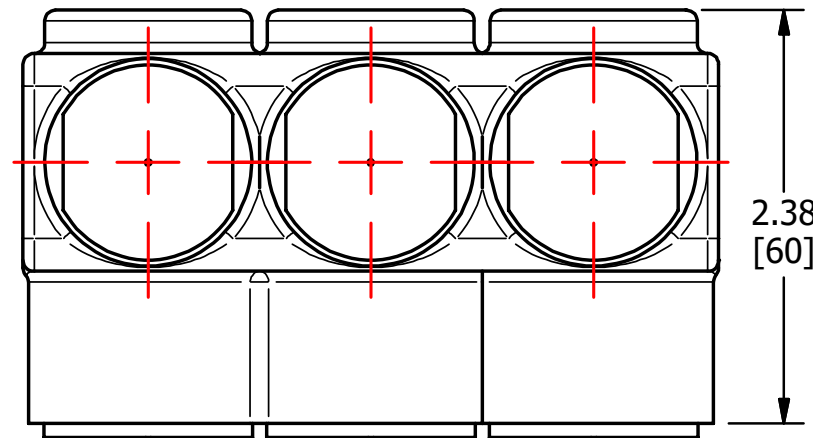


S.NO	CATALOG NUMBER	L	N	SCREW SIZE
1	NACC600-2SI	2.72 [63]	2	13/16-16
2	NACC600-3SI	4.00 [95]	3	13/16-16
3	NACC600-4SI	5.28 [128]	4	13/16-16
4	NACC600-5SI	6.56 [160]	5	13/16-16
5	NACC600-6SI	7.84 [193]	6	13/16-16
6	NACC600-7SI	9.13 [225]	7	13/16-16
7	NACC600-8SI	10.41 [258]	8	13/16-16



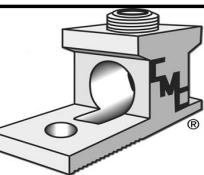
CONNECTOR FINISH: CLEAR PLATE
CONNECTOR MATERIAL: ALUMINUM
CONDUCTOR RANGE: 600 Kcmil - #4 AWG
ENCAPSULE MATERIAL: CLEAR PVC

					TO ORDER CMC PRODUCTS CALL 1-513-860-4455	DRAWN BY: TS 09-24-19	NAME OF PART: ENCAPSULATED BAR ASSEMBLY	CAT. NO.: SEE TABLE
					FOR PRODUCT INFO: http://www.cmclugs.com	CHECKED BY:	DWG NO: C58701082I-S (CHARTED)	A
A	NEW DRAWING CREATED		09-24-19	TS		DRAWING NOT TO SCALE		SHEET NO: 1 OF 1
REV.	DESCRIPTION	ECN	DATE	INIT.				

THIS INFORMATION IS PROPRIETARY TO CONNECTOR MFG. CO. AND IS NOT TO BE DISCLOSED OUTSIDE OF CONNECTOR MFG. CO. WITHOUT A CONFIDENTIALITY AGREEMENT



CONNECTOR MANUFACTURING CO.



HAMILTON, OHIO